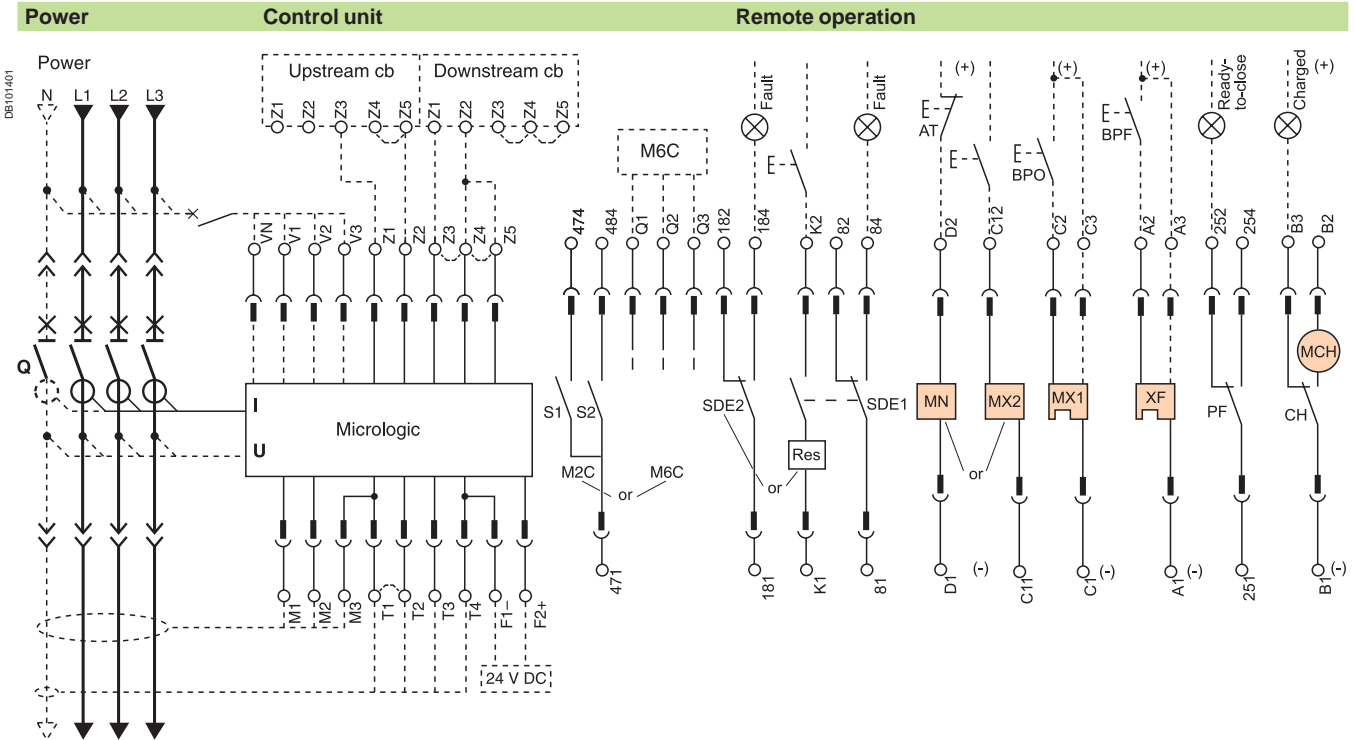


<i>Presentation</i>	3
<i>Functions and characteristics</i>	A-1
<i>Installation recommendations</i>	B-1
<i>Dimensions and connection</i>	C-1
<hr/>	
Masterpact NT06 to NT16	
Fixed and drawout devices	D-2
<hr/>	
Masterpact NW08 to NW63	
Fixed and drawout devices	D-4
<hr/>	
Masterpact NT and NW	
Communications of the 24 V DC	
External power supply AD module	D-6
Communications option 24 V DC external power supply	D-8
Earth-fault and earth-leakage protection	
Neutral protection	
Zone selective interlocking	D-10
<hr/>	
<i>Additional characteristics</i>	E-1
<i>Catalogue numbers and order form</i>	F-1

The diagram is shown with circuits de-energised, all devices open, connected and charged and relays in normal position.



Terminal block marking	Control unit										
	Com	UC1	UC2	UC3	UC4 / M2C / M6C	UC4 / M2C / M6C	UC4 / M2C / M6C	UC4 / M2C / M6C	UC4 / M2C / M6C	UC4 / M2C / M6C	UC4 / M2C / M6C
	○ E5	○ E6	○ Z5	○ M1	○ M2	○ M3	○ F2+	○ V3	○ / 484	○ / Q3	○ / Q3
	○ E3	○ E4	○ Z3	○ Z4	○ T3	○ T4	○ VN	○ V2	○ / 474	○ / Q2	○ / Q2
	○ E1	○ E2	○ Z1	○ Z2	○ T1	○ T2	○ F1-	○ V1	○ / 471	○ / Q1	○ / Q1

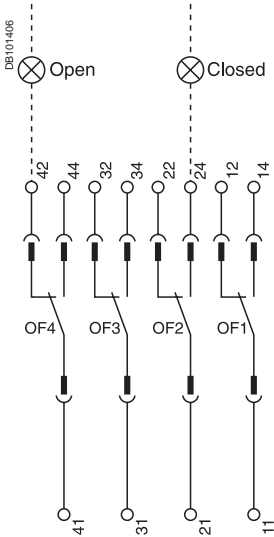
Remote operation									
SDE2 / Res	SDE1	MN / MX2	MX1	XF	PF	MCH			
○ 184 / K2	○ 84	○ D2 / C12	○ C2	○ A2	○ 254	○ B2			
○ 182	○ 82		○ C3	○ A3	○ 252	○ B3			
○ 181 / K1	○ 81	○ D1 / C11	○ C1	○ A1	○ 251	○ B1			

A	P	H	Control unit
■	■	■	Com : E1-E6 communication
■	■	■	UC1 : Z1-Z5 zone selective interlocking Z1 = ZSI OUT SOURCE Z2 = ZSI OUT ; Z3 = ZSI IN SOURCE Z4 = ZSI IN ST (short time) Z5 = ZSI IN GF (earth fault)
■	■	■	M1 = Vigi module input (Micrologic 7)
■	■	■	UC2 : T1, T2, T3, T4 = external neutral M2, M3 = Vigi module input (Micrologic 7)
■	■	■	UC3 : F2+, F1- external 24 V DC power supply VN external voltage connector (must be connected to the neutral with a 3P circuit breaker)
■	■	■	UC4 : External Voltage Connector (PTE option) or M2C : 2 programmable contacts (external relay) ext. 24 V DC power supply required. or M6C : 6 programmable contacts to be connected to the external module M6C) ext. 24 V DC power supply required.

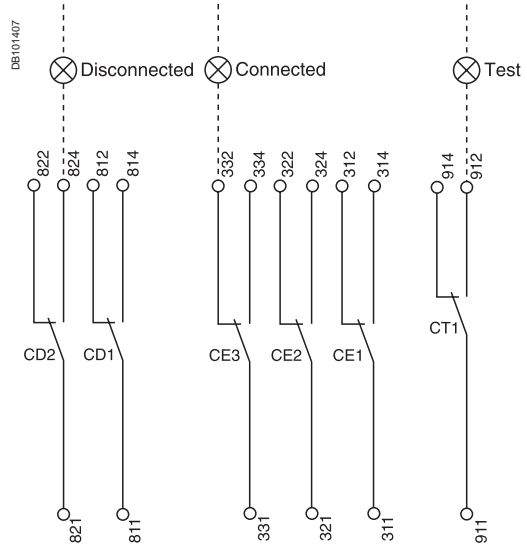
Remote operation									
SDE2 : fault-trip indication contact or Res : remote reset									
SDE1 : fault-trip indication contact (supplied as standard)									
MN : undervoltage release or MX2 : shunt release									
MX1 : shunt release (standard or communicating)									
XF : closing release (standard or communicating)									
PF : ready-to-close contact									
MCH : electric motor									
<i>Note: when communicating MX or XF releases are used, the third wire (C3,A3) must be connected even if the communication module is not installed.</i>									

A : digital ammeter.
P : A + power meter + additional protection.
H : P + harmonics.

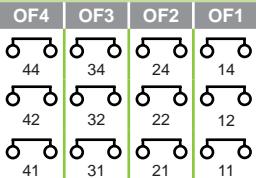
Indication contacts



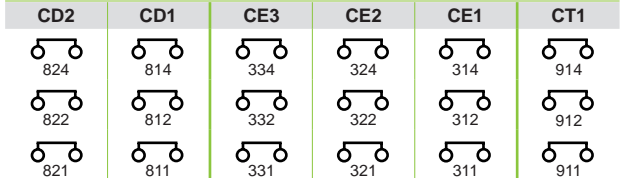
Chassis contacts



Indication contacts



Chassis contacts



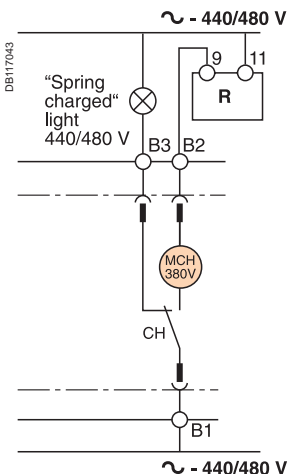
Indication contacts

OF4 / OF3 / OF2 / OF1 : ON/OFF indication contacts.

(*) Spring charging motor 440/480 V AC
(380 V motor + additional resistor).

Chassis contacts

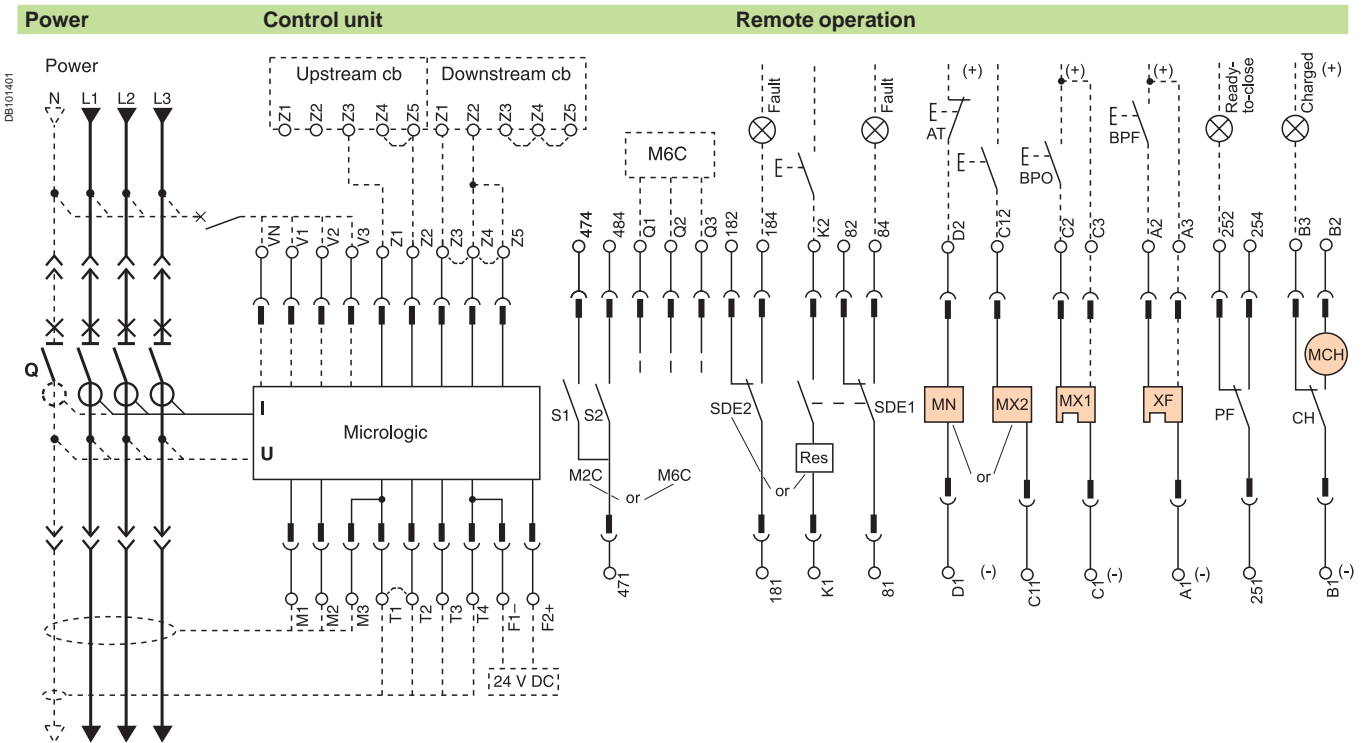
CD2 : disconnected position contacts CE3 : connected position contacts CT1 : test position contacts



Key:

- drawout device only.
- SDE1, OF1, OF2, OF3, OF4 supplied as standard.
- interconnected connections (only one wire per connection point).

The diagram is shown with circuits de-energised, all devices open, connected and charged and relays in normal position.



Terminal block marking	Control unit												
	Com	UC1	UC2	UC3	UC4	M2C / M6C							
	O5	O6	Z5	M1	M2	M3	F2+	V3	484	/	Q3		
	O3	O4	Z3	Z4	T3	T4	VN	V2	474	/	Q2		
	O1	O2	Z1	Z2	T1	T2	F1-	V1	471	/	Q1		

Remote operation																
SDE2 / Res	SDE1	MN / MX2	MX1	XF	PF	MCH										
O184 / K2	O84	O82	O81	O82	O254	O252	O251	O254	O252	O251	O254	O252	O251	O254	O252	O251

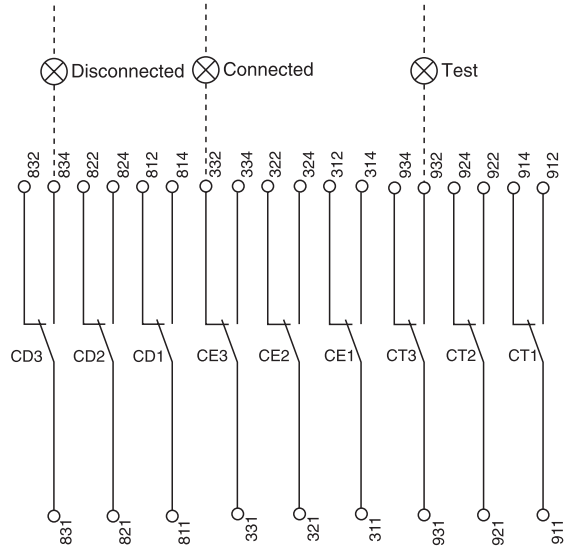
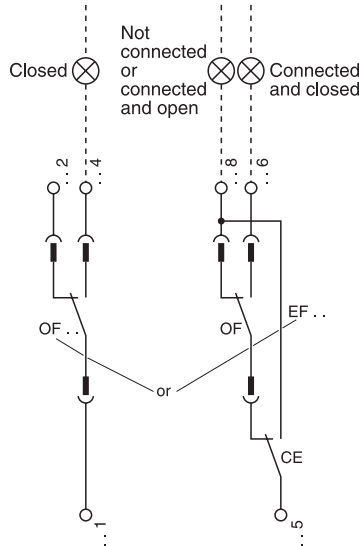
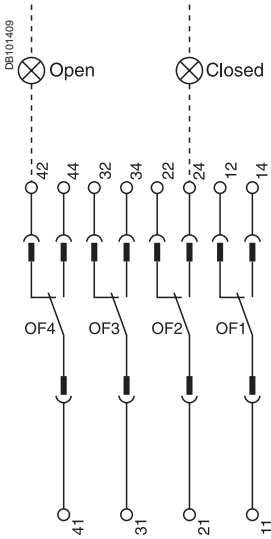
A	P	H	Control unit
■	■	■	Com : E1-E6 communication
■	■	■	UC1 : Z1-Z5 zone selective interlocking Z1 = ZSI OUT SOURCE Z2 = ZSI OUT ; Z3 = ZSI IN SOURCE Z4 = ZSI IN ST (short time) Z5 = ZSI IN GF (earth fault) M1 = Vigi module input (Micrologic 7)
■	■	■	UC2 : T1, T2, T3, T4 = external neutral M2, M3 = Vigi module input (Micrologic 7)
■	■	■	UC3 : F2+, F1- external 24 V DC power supply VN external voltage connector (must be connected to the neutral)
■	■	■	UC4 : External Voltage Connector (PTE option)
■	■	■	M2C : 2 programmable contacts (internal relay) ext. 24 V DC power supply required or M6C : 6 programmable contacts (to be connected to the external module M6C) ext. 24 V DC power supply required

Remote operation											
SDE2 : fault-trip indication contact or Res : remote reset											
SDE1 : fault-trip indication contact (supplied as standard)											
MN : undervoltage release or MX2 : shunt release											
MX1 : shunt release (standard or communicating)											
XF : closing release (standard or communicating)											
PF : ready-to-close contact											
MCH : electric motor											
<i>Note: when communicating MX or XF releases are used, the third wire (C3,A3) must be connected even if the communication module is not installed.</i>											

A : digital ammeter.
P : A + power meter + additional protection.
H : P + harmonics.

Indication contacts

Chassis contacts



Indication contacts

OF4	OF3	OF2	OF1	OF24	OF23	OF22	OF21	OF14	OF13	OF12	OF11
44	34	24	14	244	234	224	214	144	134	124	114
42	32	22	12	242	232	222	212	142	132	122	112
41	31	21	11	241	231	221	211	141	131	121	111
or											
EF24	EF23	EF22	EF21	EF14	EF13	EF12	EF11				
248	238	228	218	148	138	128	118				
246	236	226	216	146	136	126	116				
245	235	225	215	145	135	125	115				

Chassis contacts

CD3	CD2	CD1	CE3	CE2	CE1	CT3	CT2	CT1
834	824	814	334	324	314	934	924	914
832	822	812	332	322	312	932	922	912
831	821	811	331	321	311	931	921	911
or								
CE6	CE5	CE4				CE9	CE8	CE7
364	354	344				394	384	374
362	352	342				392	382	372
361	351	341				391	381	371

Indication contacts

OF4 :	ON/OFF indication contacts	OF24 or EF24	Combined "connected-deconnected" indication contacts
OF3		OF23 or EF23	
OF2		OF22 or EF22	
OF1		OF21 or EF21	
		OF14 or EF14	
		OF13 or EF13	
		OF12 or EF12	
		OF11 or EF11	

Chassis contacts

CD3	disconnected position contacts	CE3	connected position contacts	CT3	test position contacts
CD2		CE2		CT2	
CD1		CE1		CT1	
or					
CE6	connected position contacts	CE9	connected position contacts	CE8	connected position contacts
CE5		CE7		CE7	
CE4				CD6	disconnected position contacts
				CD5	disconnected position contacts
				CD4	disconnected position contacts

Key:

drawout device only.

SDE1, OF1, OF2, OF3, OF4 supplied as standard.

interconnected connections (only one wire per connection point).