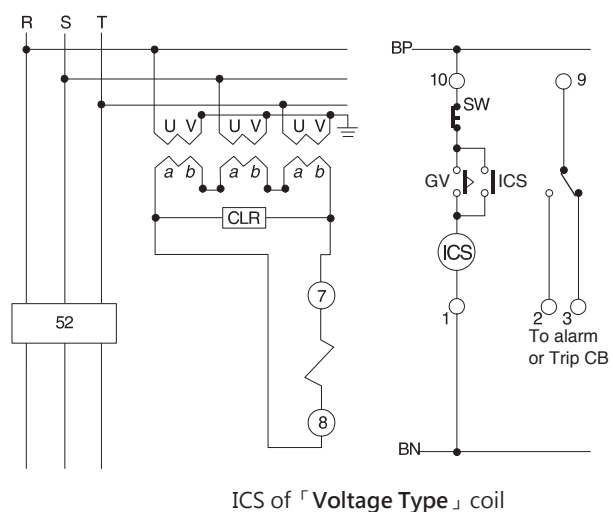
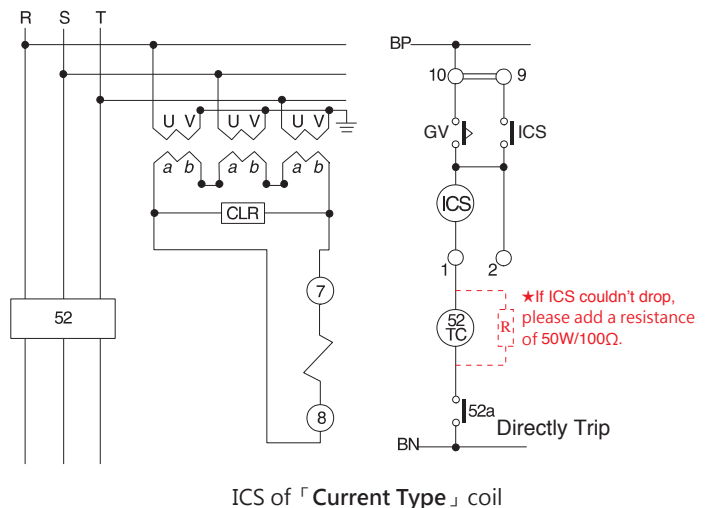
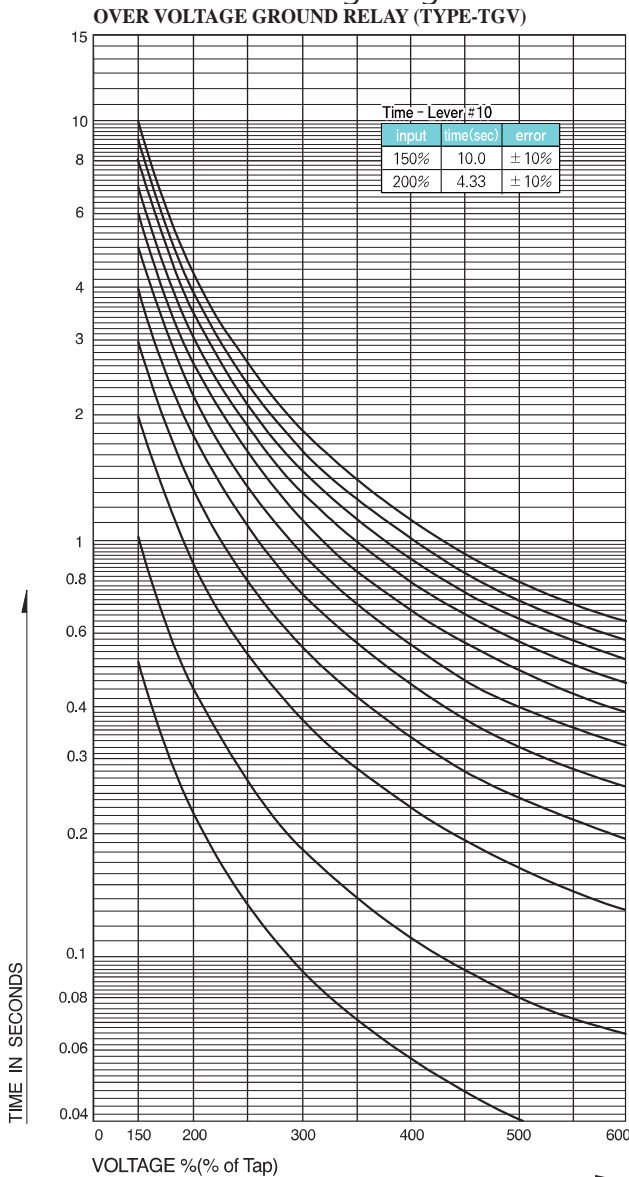


TOYO-TGV Series Operation Manual

- 1. Feature:** The Ground Overvoltage Relay is suitable for ungrounded system, and has to be used with a ground potential transformer (GPT) with tertiary winding (3rd winding) and with proper voltage selection.
- 2. Types:** There are Fix Type and Withdrawable Type.
The ICS Coils are of Current Type and Voltage Type.
When using a current type ICS coil, it must be connected in series connection to the tripping coil of the circuit breaker. When the relay trips, it will directly trip the circuit breaker. When using a voltage type ICS coil, it shall be directly applied with voltage source. When the relay trips, it will output a dry contact which can be used as an alarm, or to trip a circuit breaker.
- 3. Setting:** 20 ~ 40V for 110V rating (TGV-C1/C1V/CD1/CD1V);
35 ~ 65V for 190V rating (TGV-C9/C9V/CD9/CD9V);
Time Lever: 0.5 ~ 10
- 4. Attention!** Before use, please make sure the voltage rating is correct, and the relay is properly wired according to the wiring diagram.

Time Curve & Wiring Diagram :



TOYO TECHNICAL CO., LTD.

6F No.68 Xing Ai Road, Taipei 114, Taiwan, R.O.C

TEL: +886-2-8791-8588

FAX: +886-2-8792-6911

E-mail: toyotech@ms37.hinet.net